

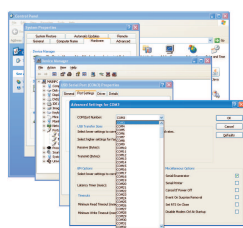
The installation of the Magtouch Uploader program is done easily and without special computer knowledge required. If "autorun" is enabled on your CD-drive, the program will start automatically.

In case of the installation CD not being available, the program may be downloaded free of charge from our website www.magtouch.at by clicking with your mouse on the <Info/Support> Tab and afterwards on <Software Download>. Save the downloaded setup file in a folder of your choice and run it by double-clicking on it with your mouse in Windows Explorer. After selection of the desired user language and acceptance of the licensing agreement, the program will install on the harddisk of your PC. To facilitate customer support at a later stage, we would recommend to use the proposed program folder <C:\Magtouch>. Please ensure that the USB Driver installation is selected during this process in the last window of the installation procedure, i.e. the check box "Launch USB Drivers" is selected.



Now you plug the USB cable which was supplied with the system into a USB port of your PC. When the cable is plugged in initially, the PC will display the notice "Found new hardware" and continue to configure the required USB drivers.

When you start the Uploader program for the first time, it will prompt for the name of your first site and thereafter it will look at all available ports for the connected cable. If it has found the cable on one of the PC's ports, it will show the message "Looking for Magtouch ..." in the upload window of the program. If this message is shown, you may jump over the next point and proceed directly to installation Point 4. If this message does not come up on the screen and the program continues to display "Scanning Port", the cable cannot be located by the program. In this case check that the PC ports have all been enabled in the BIOS setup and that the cable is plugged in securely. The BIOS setup procedure can normally be accessed by pressing during start-up of the PC. If this does still not find the cable, check the COM port that was selected by Windows, as outlined in point 3.



If the program does not locate the cable in spite of the checks outlined under point 2 the COM port number which Windows selected when installing the USB drivers must be checked. To do this, select the following sequence by clicking with your

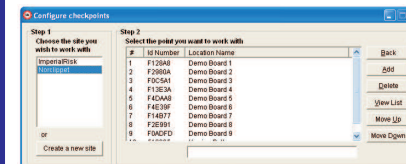
mouse on these Windows procedures: <Start> - <Control Panel> - <System> - <Hardware> - <Device Manager> - <Ports (COM and LPT)> - <USB Serial Port (COMx)> - <Properties> - <Port Settings> - <Advanced> - <COM Port Number>. Windows sometimes installs USB devices with COM port numbers that are too high for the Uploader program to find the cable connected to them. If you find that the assigned COM port number is 10 or even higher, use the down-arrow next to the COM port window and select the lowest possible number which Windows lists as not "(in use)".



Before the program can be used the ID Points of the various sites have to be entered. The easiest way to do this is to number the points on their revers side with a marker pen consecutively, read

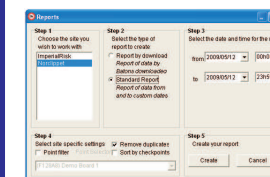
them with the Magtouch baton and download the data into the PC. For this procedure you need a Magtouch with no data in memory which you can check by performing an upload of the baton on the PC. If data is in the baton, select the option <Ignore unknown checkpoints> when the relevant message is shown. Then the previously numbered ID Points are read with the baton in the same sequence as they have been numbered. After downloading and selecting the option <Insert in existing site>, a checkpoint list will be created with the points in the same sequence as they have been touched.

It is easiest to set up the checkpoint list with the points at the PC when the program is installed, but if the ID points have already been mounted on the site, the sequence is the same, using an "empty" baton and touching each point. It is advisable in this case, to record on paper the locations of each point while they are being touched with the baton. This will make it easier later on when the names of the points are being recorded in the program.



After the baton data was downloaded on the PC, a checkpoint list was set up. However, this list shows all

points as "Unknown checkpoints" under <Location Name>. To enter the correct name for each of the ID point locations, click on <Checkpoints> to open the checkpoint edit window. Select the first point with the mouse by clicking and highlighting it in the large checkpoint window and enter the correct name in the single line window below. Thereafter do the same for the remaining checkpoints.



After the checkpoint list has been set up and the point mounted on site, the system is ready for use. The guards are touching the points with the Magtouch batons during

their patrols and the data is downloaded onto the PC at the end of their shift or whenever practicable. For this the program is started and once the message "Waiting for Magtouch..." is displayed the baton is put onto the upload station. It is held down securely until the patrol report is displayed on the screen.

Please note: Since the clock of the Magtouch baton is set from the clock in the PC during every data download, it is important to check that the PC clock is set correctly. The downloaded report of the data contained in the Magtouch baton is displayed on the screen of the PC. Should a report for a different time period be required, one can generate it by selecting <Report>, <Standard Report> and indicating the date/time periods for which the report should be generated. All reports are generated in ASCII-Text format and displayed in "Windows-Notepad". All "Reports by Download" are saved automatically in the folder of their respective sites. They are named after the "Month/Day/Hour/Minute.txt" of the download, e.g. if the file is named "06051024.txt", then the data download has been done on June 5th, at 10h24. All downloaded data is stored in the folder with the site name, i.e. if the above data comes from the site "Mobil" it can be found on the PC in the location "C:\Magtouch\Mobil\06051024.txt". This is useful to know if one would want to email such reports.